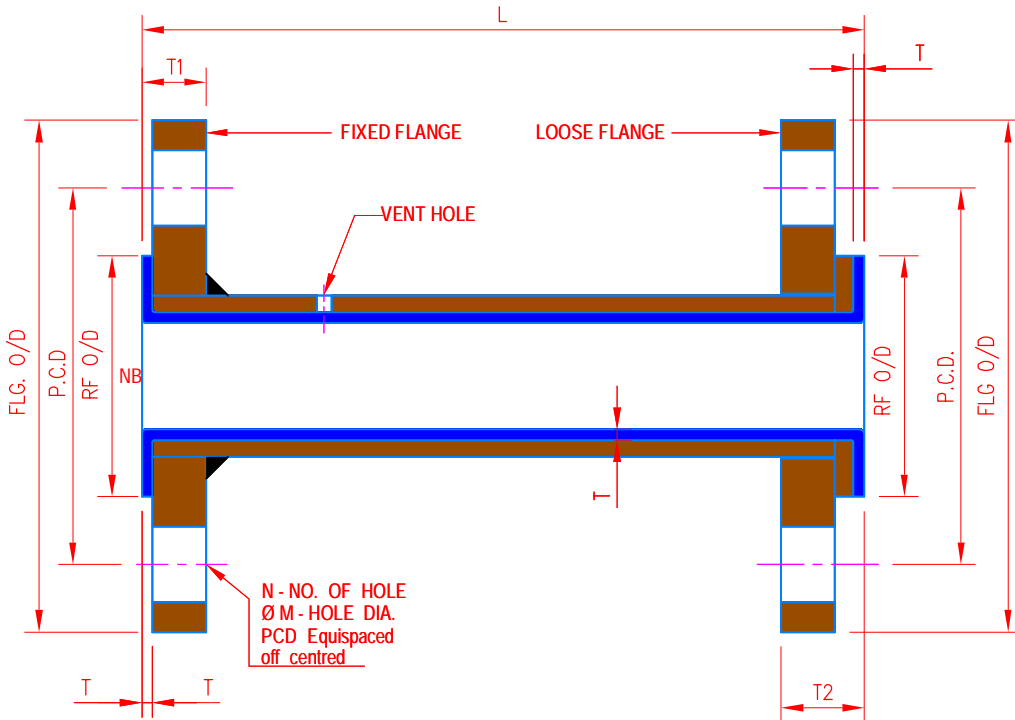




PTFE LINED PIPES CLASS - 150#

NOTE: This Drawing, Catalogue, Photographs & Information there off are sole & Exclusive Property of "IVE", Icon Valves & Engineering Pvt. Ltd. Mumbai. It cannot be Copied, Distributed or Circulated to any other firm. Party or Individual without written consent from us. We keep our rights reserved to make any changes time to time in technical specification & dimension without prior Notice. The dimensions, Drawing & Photographs illustrated are approximate & may some time differ from the actual product. Please ask for final Drawings & Photos against orders.



CLASS - 150

| NB | L (mm) | | FLG. O/D | RF O/D | P.C.D. | App. T1 | App. T2 | N x M | LINER THK | | WEIGHTS | |
|--------|--------|------|----------|--------|--------|---------|---------|-----------|------------|----------------|-------------|-------------------|
| | MAX. | MIN. | | | | | | | Vacuum (T) | Non Vacuum (T) | Pipe (kg/m) | Pair of flgs (kg) |
| 1/2" | 6000 | 65 | 89 | 35.1 | 60.5 | 14.2 | 24.2 | 4 x 1/2" | 3.0 | 3.0 | 1.2 | 1.5 |
| 3/4" | 6000 | 75 | 98 | 42.9 | 69.9 | 15.7 | 27.7 | 4 x 1/2" | 3.0 | 3.0 | 1.6 | 2.0 |
| 1" | 6000 | 75 | 108 | 50.8 | 79.2 | 17.2 | 29.2 | 4 x 1/2" | 4.0 | 3.0 | 2.5 | 2.5 |
| 1.1/4" | 6000 | 80 | 118 | 63.5 | 88.9 | 18.7 | 30.2 | 4 x 1/2" | 4.0 | 3.0 | 3.4 | 3.6 |
| 1.1/2" | 6000 | 80 | 127 | 73.2 | 98.6 | 20.5 | 32.5 | 4 x 1/2" | 4.0 | 3.0 | 4.5 | 4.2 |
| 2" | 6000 | 90 | 152 | 91.9 | 120.7 | 22.1 | 37.1 | 4 x 5/8" | 4.0 | 3.0 | 5.8 | 5.5 |
| 2.1/2" | 6000 | 90 | 178 | 104.6 | 139.7 | 25.4 | 40.4 | 4 x 5/8" | 4.0 | 3.0 | 7.1 | 7.2 |
| 3" | 6000 | 100 | 191 | 127.0 | 152.4 | 27.9 | 42.9 | 4 x 5/8" | 4.0 | 3.0 | 11.0 | 9.3 |
| 4" | 6000 | 100 | 229 | 157.2 | 190.5 | 28.9 | 43.9 | 8 x 5/8" | 4.5 | 3.0 | 16.0 | 13.6 |
| 5" | 6000 | 100 | 254 | 185.7 | 215.9 | 28.9 | 43.9 | 8 x 3/4" | 6.0 | 5.0 | 22.0 | 17.2 |
| 6" | 6000 | 100 | 279 | 215.9 | 241.3 | 30.4 | 45.4 | 8 x 3/4" | 6.0 | 5.0 | 28.0 | 21.8 |
| 8" | 6000 | 120 | 343 | 269.7 | 298.5 | 33.4 | 48.4 | 8 x 3/4" | 6.0 | 5.0 | 43.0 | 38.4 |
| 10" | 6000 | 130 | 406 | 323.9 | 362.0 | 35.7 | 50.7 | 12 x 7/8" | 7.5 | 5.0 | 60.0 | 47.2 |
| 12" | 6000 | 130 | 483 | 381.0 | 431.8 | 37.8 | 52.8 | 12 x 7/8" | 7.5 | 5.0 | 74.0 | 72.6 |

| SR NO. | DESCRIPTION | TECHNICAL DATA | |
|--------|----------------------|--|---|
| 01 | PIPE | ASTM A106 grade B, ANSI B 36.10, Sch 40 upto 150 NB, Sch 30 upto 250 NB & Sch 20 for 300 NB. | 1 |
| 02 | FLANGES | MS Plate Flanges As per IS2062, ASA 150# 1 Fix & 1 Loose | 2 |
| 03 | PTFE LINERS | Past Extruded / Ram Extruded or Isostatic Molded with Standard PTFE Resin as per ASTM D 1457 or Equivalent WHITE COLOR | 1 |
| 04 | TESTING & INSPECTION | Spark tested for 10 KV & Hydro tested at 10 kg/cm ² & painted with 2 coats of Red Oxide Primer | |
| 05 | PRESSURE RATING | Vacuume to 6 kg/cm ² | |
| 06 | TEMP. RATING | -29 °C TO 260 °C | |